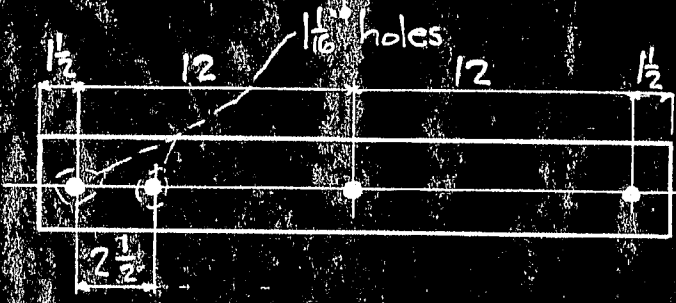
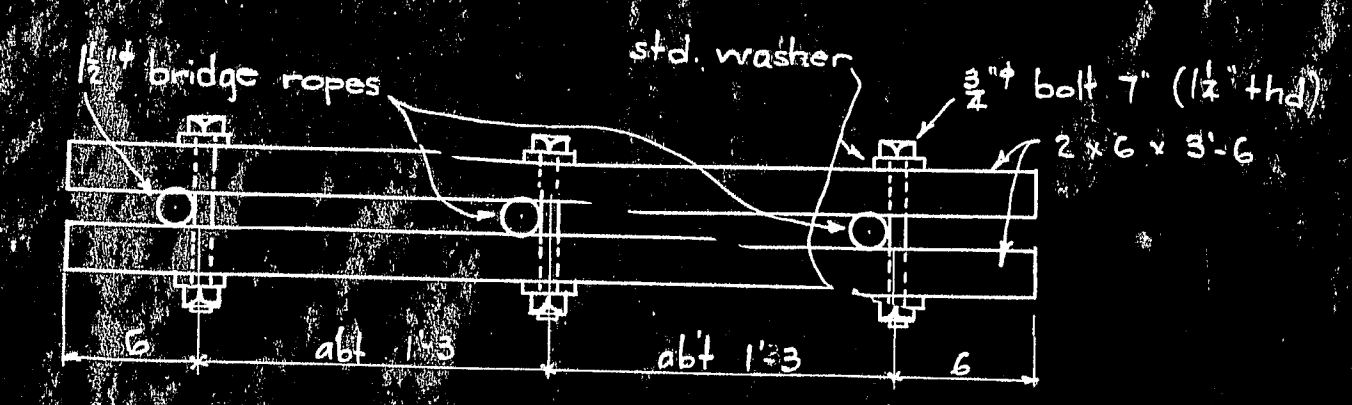


Wanted 10 Clamps "C4"

- Material for 1 Clamp "C4"
- 2 6 x 7 Y. Pine blocks 1'-5 Bore
 - a 4 x 3/8" pl. 1'-7 1/2
 - b 4 x 3/8" pl. 1'-7 1/2 (slot end holes)
 - 2 carriage bolts 8"
 - 2 bolts 7"
 - 12 washers for 3/4" bolts
 - 3 bolts 17" lg. 2 1/2" R Thd.



Wanted 16 Plates "M1" 4 x 1/2 x 2'-3 To be furnished
16 - 1/2" Wire Rope Clips by P.B.C. Tool House.

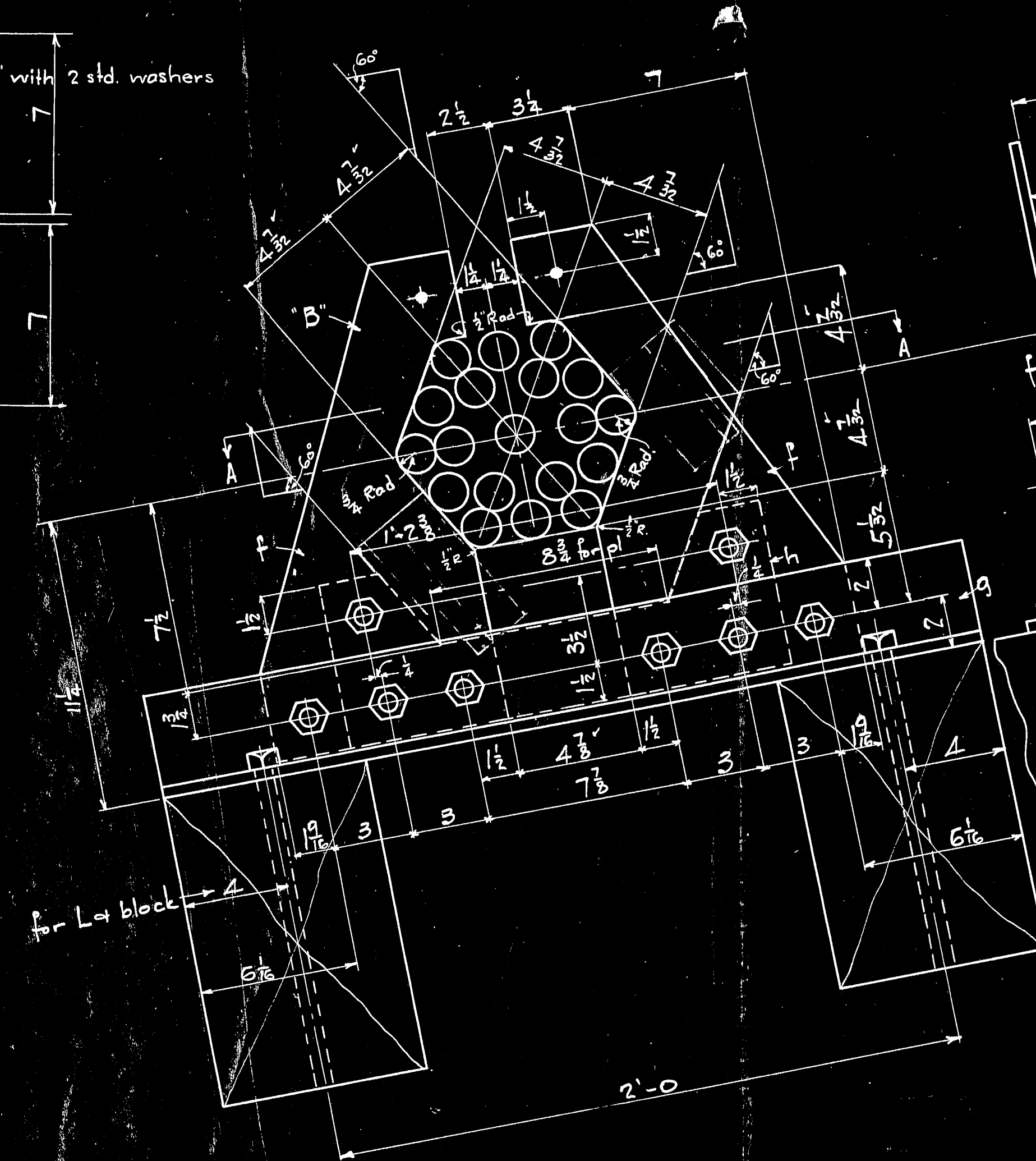


Clamp to prevent spinning of ropes at anchorage (first layer shown, remaining layers similar)

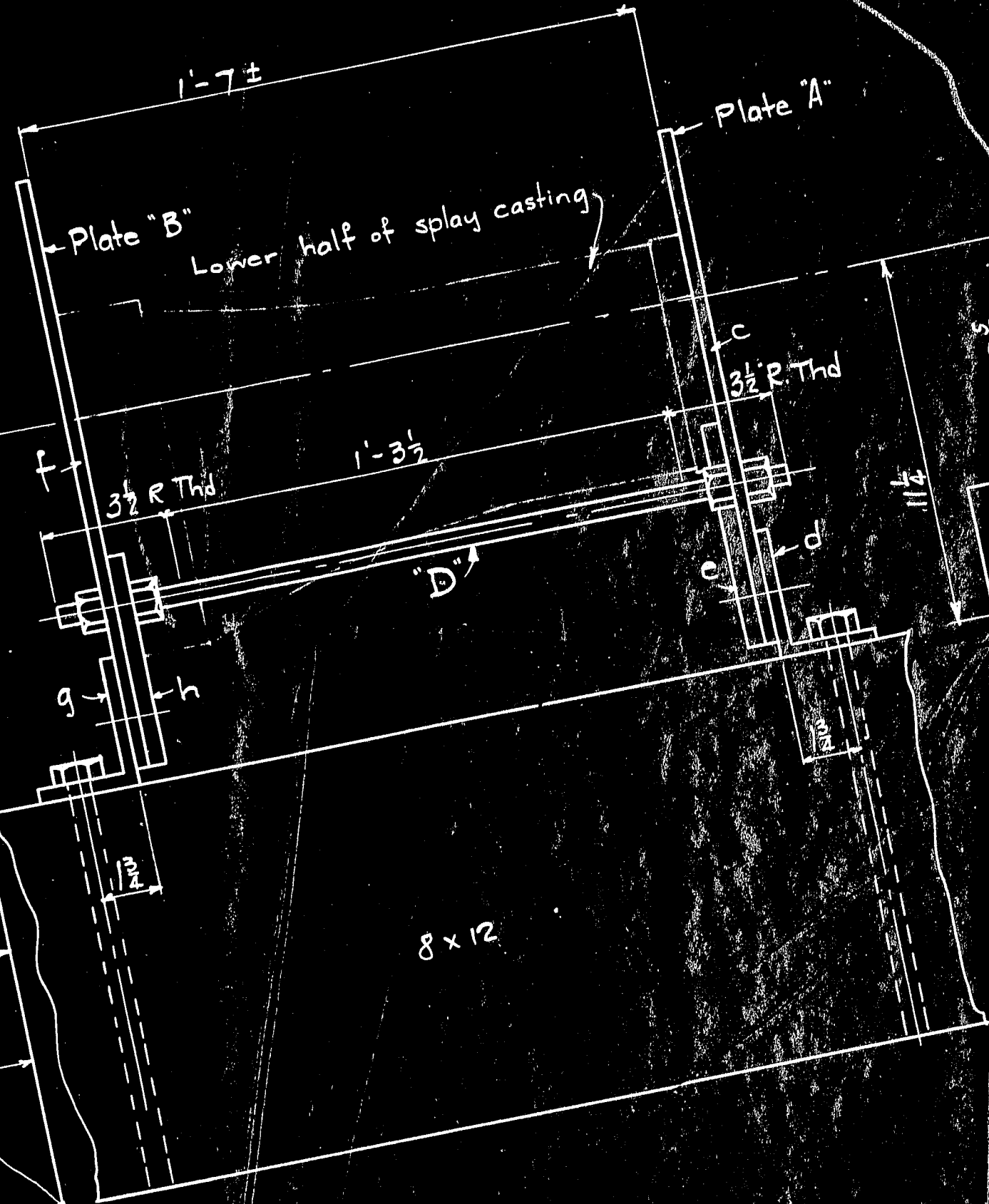
Place monkey tails (pls M1 and 1/2 v.e. clips) on all but last rope of layer. After last rope of layer has been placed, clamp all ropes in layer with 2 x 2 x 6 and 3/4" x 7" bolts - one to each rope. Remove monkey tails for use in next layer.

- Wanted
- 2 x 6 3/8" x 6, 1/4" x 9, 3/16" x 6
 - 3/4" bolts 64/7
 - 12 Std washers for 3/4" bolts

Grind edges smooth to a 3/16" radius
Section A-A



Keep plate and casting lined up, particularly at this end, so that weight of all strands will not bear on thin plate above



- Wanted 4 Splay Casting Supports A1"
4 3/4" x 1'-10 1/2" Rods D1"

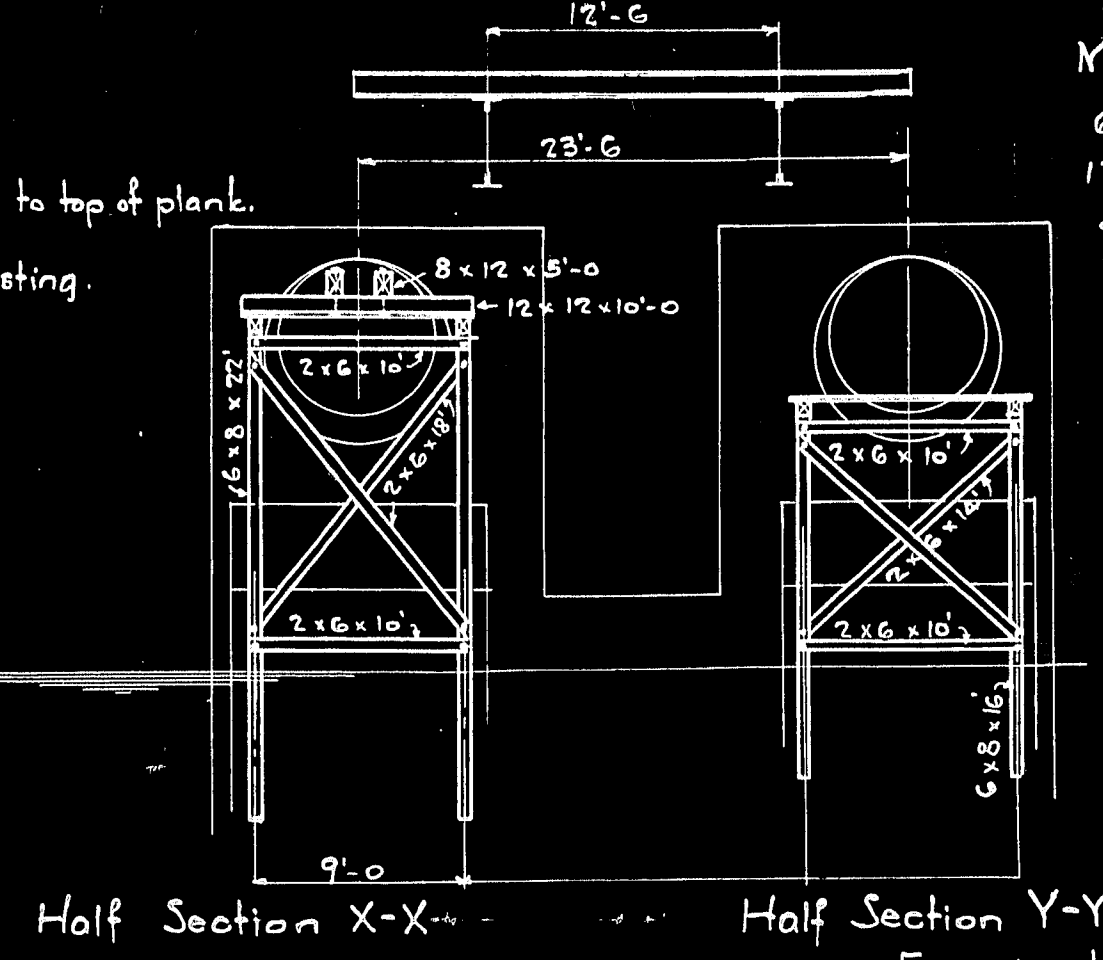
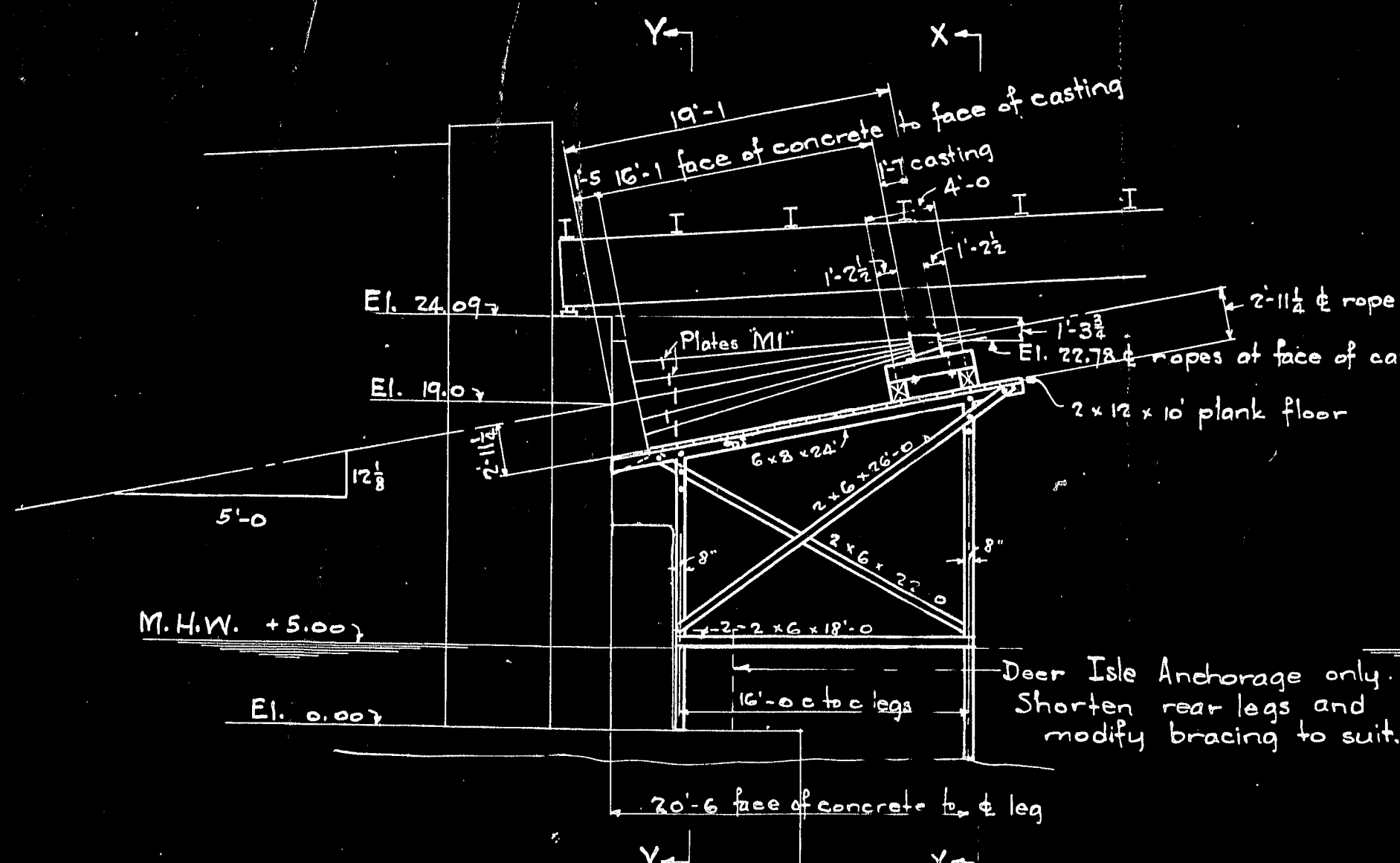
All open holes 1/2"
Grind all edges in contact with ropes to a 3/16" radius.

- Material for Support "A1"
- 2 1/2" x 3/4" pl. 1'-4 Tp.
 - 1 1/2" x 3/4" pl. 1'-4 Tp.
 - 1 1/2" x 3/4" pl. 1'-4 Tp.
 - 2 1/2" bolts 2 1/2"
 - 2 1/2" bolts 2 1/2"

- Material for Support "B1"
- 2 1/2" x 3/4" pl. 1'-4 Tp.
 - 1 1/2" x 3/4" pl. 1'-4 Tp.
 - 1 1/2" x 3/4" pl. 1'-4 Tp.
 - 2 1/2" bolts 2 1/2"
 - 2 1/2" bolts 2 1/2"

Temporary Cable Bands and Supports for Splay Castings

Bridge over Eggemoggin Reach from Little Deer Isle to Sedgwick Hancock Co., Maine.



- Mat'l for Platforms
- 6 x 8 3/24", 3/22", 3/16"
 - 12 x 12 3/10"
 - 8 x 12 3/5"
 - 2 x 6 3/26", 3/22", 1/16", 3/16", 1/16"
 - 2 x 12 3/8"

Revised 6-22-38

The Phoenix Bridge Co.
Erection Dept.
Engineer R.S. Foulds
Draftsman J.P. Wagoner
Scale 1 1/2" = 1'-0"
Date 4/28/38.

Supt. of Erection C.O. 457 Dwg. C3

